

LEASING OF COMMERCIAL PREMISES

NEWSEC

Newsec's brokerage team provides all services related to the leasing of commercial real estate, including the creation of a lease and occupancy strategy, tenant searches, and consulting of property owners also at a very early stage in a project's development.

Our professionals take part in every lease-related process - from the preparation of the property's presentation to the signing of a lease agreement.

Newsec's specialists, with their extensive experience and real estate market information, help clients get maximally effective results with minimal time outlays and thus increase the value of the property they manage.



- Preparation of property lease concept, strategy, pricing



- Consulting on marketing plan and measures



- Active search for tenants for a property
- Client representation and advisory in negotiations with tenants on commercial terms and key contractual conditions



- Reporting on a property's leasing process
- Provision of relevant information about the market

NUMBERS



EUROMONEY
RATING



SHARE OF LEASING
TRANSACTIONS



50K SQM
LEASED DEALS

PROJECTS



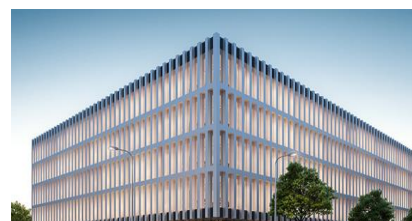
BUSINESS CENTRE „QUADRUM“

39 000 sqm
„Schage Real Estate“
Vilnius, Lithuania



LEISURE AND ENTERTAINMENT CENTRE

7 500 sqm
UAB „Despecto“
Vilnius, Lithuania



BUSINESS CENTRE „UPTOWN PARK“

12 500 sqm
UAB „Vilbra“
Vilnius, Lithuania